

# Twin Palms

OASIS COLLECTION



DYNASTY **SPAS**

**EPIC HOT TUBS**  
SWIM SPAS & MORE

THE PREMIER DYNASTY  
SPAS DEALER IN NC

**EPICHOTTUBS.COM**

**888-884-3742**



*My husband and I are in our 50s and remain very physically active. Unfortunately, our daytime adventures result in nighttime muscle aches and joint pain. The Arizona weather is perfect for year-round use of our spa, as it gets quite cool in the mornings and evenings. Dynasty has the best product, as well as the customer service and support to match. Thank you!!*

**50**  
JETS



## Twin Palms Dual Lounger

60" x 82.5" x 30"

180 Gallons (approx.)

Padded Headrests

LED Top Rail Lighting

LED Underwater Lighting

Cup Holders

Easy Grip Built-in Handles

Electrical 220 v / 60 a

2 - 6.0bhp Pumps

Filtration System Size 50 ft<sup>2</sup>

Weight: Dry / Filled (approx.)

375 lbs. / 2,175 lbs.



# THE MOST COMFORTABLE SPA. MADE IN THE USA.

## OTHER DYNASTY SPA MODELS



*Bimini*

*Treasure Cay*

*Sunset Cove*



*Tranquility Harbor*

*Serenity Cove*

*Ocean Breeze*



*Cabana Bay*

*Nassau Royale*

*Caribbean Breeze*



*Coconut Bay*

*Pleasure Cove*

*Palm Island*



*Paradise Bay*

*30th Anniversary*

## STANDARD FEATURES (Illumination Varies)



**Illuminated Diverter**



**Adjustable Jets**



**Illuminated Topside (K.1000 Standard)**



**Insulation**



**Underwater LED Lighting**

## OPTIONAL FEATURES (Illumination Varies)

### IN.TOUCH2® WI-FI REMOTE



Take full control of your spa experience right from your iOS or Android smartphone or tablet with the Intouch.2® app. With this innovative app, you can easily access predefined spa experiences or tailor your own for a truly personalized soak. Enjoy the convenience of managing every function of your spa with just a few taps, making relaxation more accessible than ever.



### IN.MIX LED LIGHTING CONTROLS



Transform your spa experience with stunning underwater light shows that do so much more than enhance your soak—they redefine your entire environment. Imagine effortlessly shifting the atmosphere from lively parties to intimate, romantic evenings, all while benefiting from enhanced safety after dark. The innovative in.Mix adjustable and independent zone LED lighting system features 113 points of mesmerizing light, illuminating everything from the footwell to the spa lip and controls. Enjoy the enchanting display of water dancing through a vibrant spectrum of colors, adding an unforgettable charm to every moment you spend in your spa.

### IN.STREAM 2 AUDIO SYSTEM Not available on the Bimini, Treasure Cay or Sunset Cove

Elevate your spa experience with the incredible sound of your favorite music streamed right from the comfort of your water sanctuary! The in.stream 2 audio station is a compact, rugged, and splash-proof all-in-one outdoor audio system that delivers outstanding sound quality using advanced Class D amplifier technology. It's designed to enhance your backyard audio experience effortlessly. With easy connectivity, you can control your audio player or smartphone directly from your spa keypad, allowing you to enjoy your relaxing soak without missing a beat.



## ACRYLIC COLOR OPTIONS



**Sterling Marble**



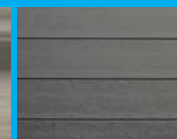
**Tuscan Sun**



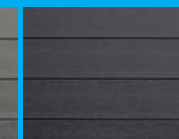
**Storm Clouds**



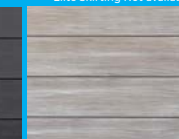
**Smoky Mountain**



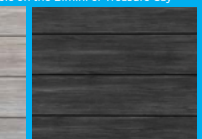
**Gray Confer Standard**



**Black Confer Standard**



**Elite Coastal Gray Upgrade**



**Elite Ash Upgrade**

All Rights Reserved.012025

## SKIRTING COLOR OPTIONS

Elite Skirting Not available on the Bimini or Treasure Cay